

INSTALLATION INSTRUCTIONS

INTRODUCTION

- 1) THE DEVICE IS SUITABLE FOR FIRE AND SMOKE DOORS WHICH IS STEEL OR TIMBER, FIRE RARE1 HOURS.
- 2) THE 950MM DEVICE IS FOR DOORS MEASURING 2133MM HEIGHT AND 650-850MM WIDE.
THE 1045MM DEVICE IS FOR DOORS MEASURING 2133MM HEIGHT AND 850-1100MM WIDE.
- 3) THE DOOR MUST WEIGH NO MORE THAN 200KG AND BE MOUNTED IN A GOOD-QUALITY WELL-MADE FRAME
- 4) THIS DEVICE MUST BE FITTED BY COMPETENT PERSON
- 5) IF THE DOOR IS FITTING WITH A DEVICE WHICH ALLOWS YOU TO OPEN IT FROM THE OUTSIDE, READ THE INSTRUCTIONS PROVIDED WITH THAT DEVICE.

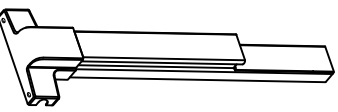
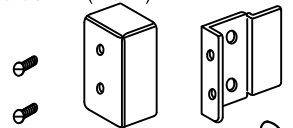





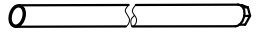
CAUTION

The safety features of this product are essential to its compliance with EN 1125. No modification of any kind, other than those described in these instructions, is permitted.

HANDING REVERSAL

If the panic device is to be used with an outside access device, only the CMPA004, CMPA006, CMPA008 and CMPA010 can be used, and they are supplied separately .

1. PARTS CHECK

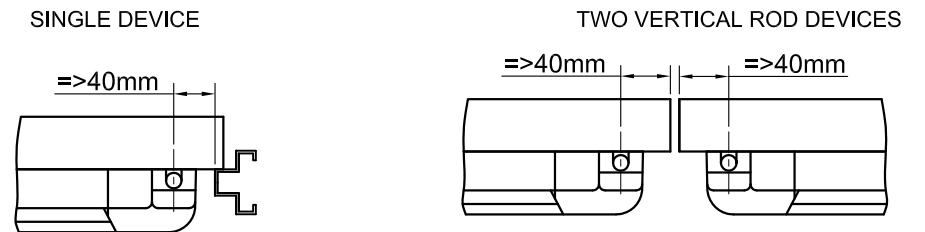
<p>1) DEVICE</p> 	<p>4) SCREW PACK</p> <p>A) MOUNTING BRACKET AND END CAP WITH M4X8 SCREW(2 SET)</p>  <p>B) COTTER KEY(2 QTY)</p>  <p>C) ROD GUID (2 QTY) WITH SCREW 3.5X12(4 QTY)</p>  <p>D) M5x35 SEXUAL BOLT(6 QTY)</p>  <p>E) M5X25 BOLT (6 QTY)</p> 
<p>2) STRIKE</p>  <p>TOP STRIKE BOTTOM STRIKE STRIKE FOR DOUBLE DOOR</p>	<p>6) VERTICAL RODS (LENGTHS FOR 2133MM OPENINGS)</p>  <p>A) TOP ROD=950MM(1 QTY) B) BOTTOM ROD = 835MM(1 QTY)</p>

- 1) MAKE SURE THE CORRECT DEVICE IS BEING USED.
- 2) MAKE SURE ALL NEEDED PARTS ARE ON HAND.
- 3) MAKE SURE OUTSIDE TRIM (IF BEING USED) HAS BEEN PROVIDED AND IS THE CORRECT HANDING.

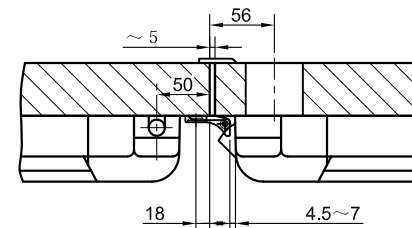
2. DOOR LAYOUT

- 1) DOOR MUST BE FITTED AND HUNG PROPERLY BEFORE PROCEEDING.
- 2) MARK VERTICAL C AND HORIZONTAL C ON DOOR AND FRAME.

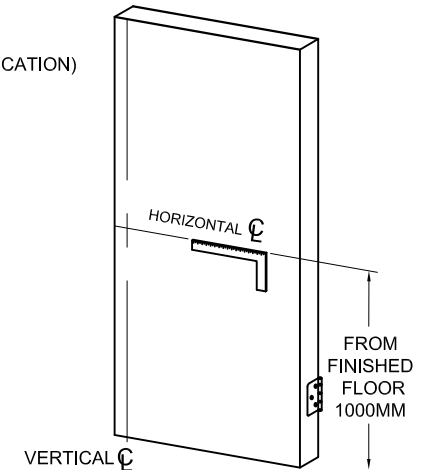
A) VERTICAL C :



VERTICAL ROD x RIM DEVICE (CMP301 OR CMP302 REQUIRED FOR THIS APPLICATION)

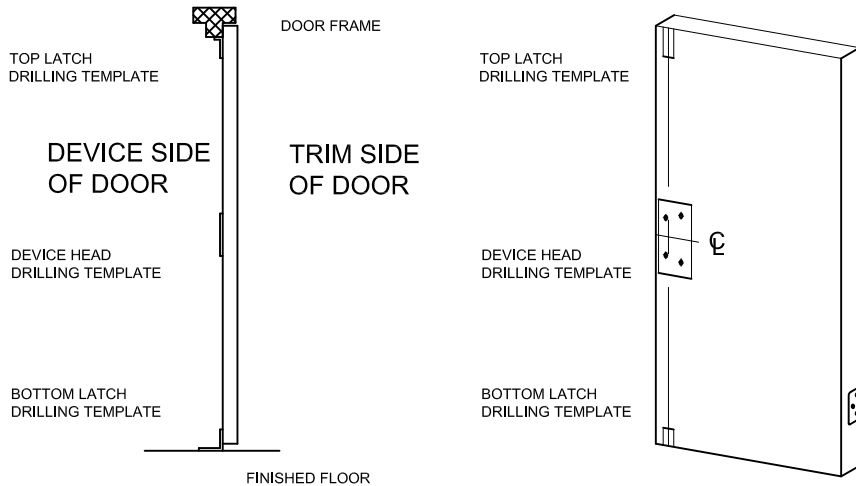


B) HORIZONTAL C :



3. DOOR & HARDWARE PREPARATION

1) TAPE DRILLING TEMPLATES ON DOOR USING VERTICAL C AND HORIZONTAL C .

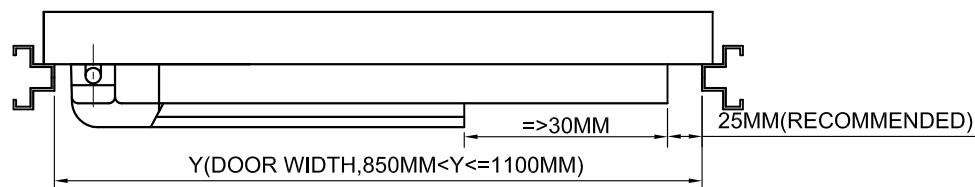


2) PREPARE HOLES FOR DEVICE, STRIKES AND LATCHES.

3) IF USING OUTSIDE TRIM, PREPARE DOOR USING SEPARATE TRIM DIRECTION SHEET.

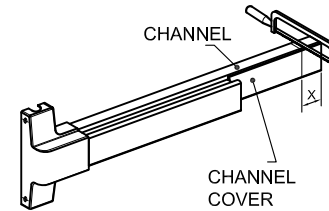
4) DETERMINE DEVICE LENGTH.

- A) THE DEVICE IS FIT FOR THE DOOR WIDTH FROM 850MM TO 1100MM
- B) MEASURE THE DOOR WIDTH OF "Y".
- C) LENGTH OF DEVICE TO BE CUTTED IS "X": $X=1100-Y$



5) IF DOOR WIDTH IS LESS THAN 1100MM, CUT THE DEVICE.

- A) MARK THE DEVICE FROM THE END TO THE LENGTH "X".
- B) CUT BOTH CHANNEL AND CHANNEL COVER TO MARKED DIMENSION AND REMOVE BURRS.



NOTE: FACTORY RECOMMENDS SAWING RATHER THAN GRIND CUT TO SIZE. GRINDING CAN DAMAGE THE FINISH OF THE DEVICE AND SAWING RESULTS IN LESS DAMAGE TO THE DEVICES'S FINISH.

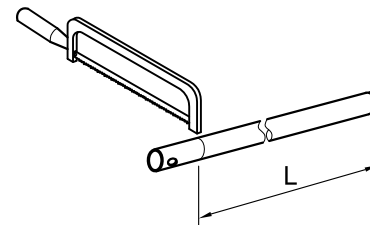
6) IF DOOR OPENING IS NOT AND LESS THAN 2133MM, DETERMINE TOP ROD LENGTH BASED ON 1000MM HORIZONTAL FROM FINISHED FLOOR, MODIFY TOP ROD TO REQUIRED LENGTH.

A) SUBTRACT DOOR OPENING FROM 2133MM OPENING.

B) SUBTRACT ANSWER FROM TOP ROD FROM 950MM TO DETERMINE TOP ROD LENGTH L (EXAMPLE: 2000MM OPENING - 2133-2000=100, 950-100=850MM TOP ROD).

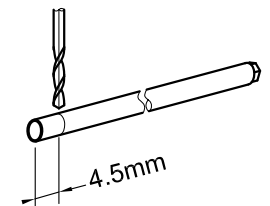
C) MARK RODS TO REQUIRED LENGTH.

D) CUT ROD AT MARKED LOCATION.



NOTE: ROD MUST BE MEASURED FROM THREADED PORTION OF RODS. DO NOT CUT ROD AT END WITH INTERNAL THREADS.

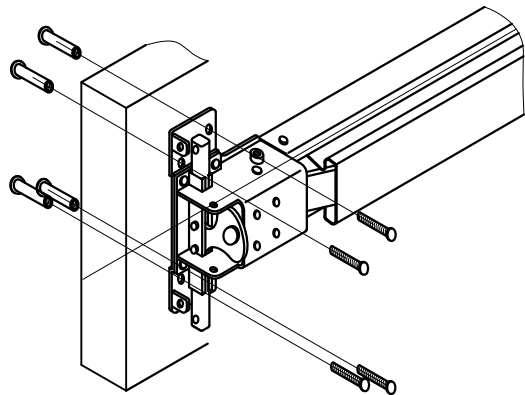
E) DRILL COTTER KEY CONNECTION HOLE. DRILL 4.0MM DIA. HOLE THRU ON VERTICAL ROD 4.5MM FROM END OF ROD JUST CUT.



4. HARDWARE INSTALLATION

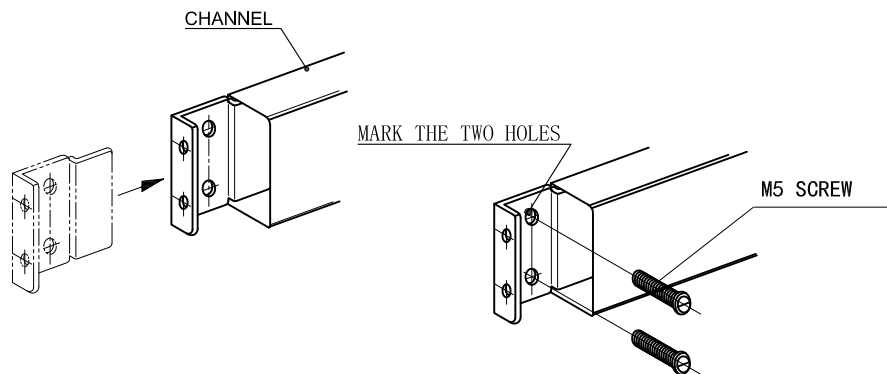
1) IF USING OUTSIDE TRIM OR SEXBOLTS, MOUNT TRIM PER DIRECTIONS IN TRIM BOX.

2) FIX DEVICE BY SEXUALBOLT AND THROUGHBOLT.

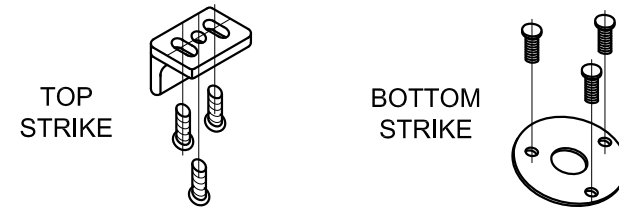


3) INSTALL END CAP MOUNTING BRACKET USING MOUNTING SCREW.

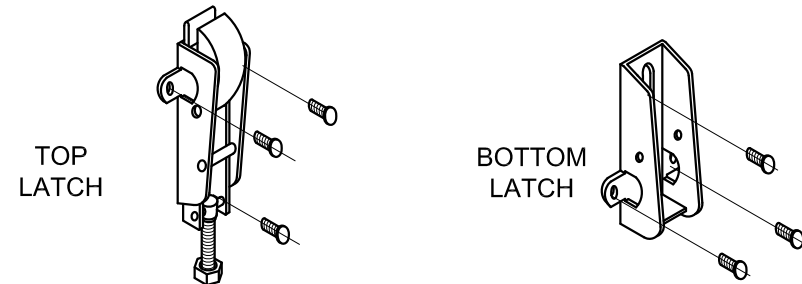
- A) SLIDE MOUNTING BRACKET INTO CHANNEL.
- B) MARK MOUNTING HOLES, AND PREPARE THE HOLES.
- C) INSTALL MOUNTING SCREWS



4) INSTALL THE TOP STRIKE AND THE BOTTOM STRIKE



5) INSTALL TOP AND BOTTOM LATCHES.



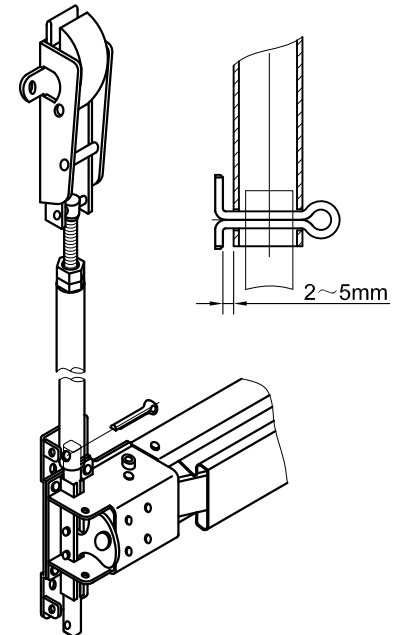
6) TOP ROD INSTALLATION:

A) PLACE THE TOP ROD INTO THE BOLT OF TOP LATCH, AND SLIDE THE SLIDE BAR INTO THE BOTTOM OF TOP ROD.

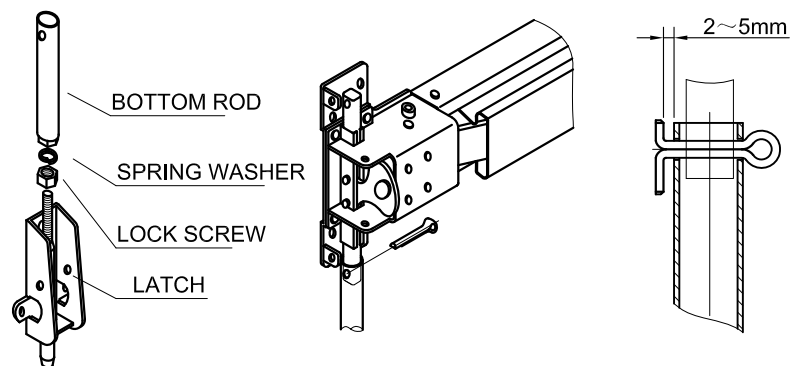
B) ADJUST THE SCREW OF TOP ROD TO MAKE SURE THE COTTER KEY HOLE ALIGNED WITH THE HOLE IN SLIDE BAR. PUT THE THE COTTER KEY INTO THE HOLE(NOTE: DON'T TIGHT THE COTTER KEY).

C) TEST THE TOP ROD, IF IT LOCK AND SMOOTH WELL, TIGHT THE COTTER KEY.

D) IF THE TOP ROD DOESN'T WORK WELL, TAKE OUT THE COTTER KEY, ADJUST THE ADJUSTMENT SCREW, REPEAT STEP OF B)&C) UNTIL IT LOCK AND WORK WELL.

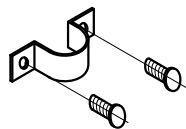


7) PLACE THE BOTTOM ROD TO BOTTOM LATCH, AND SLIDE THE SLIDE BAR INTO THE TOP OF BOTTOM ROD. ADJUST THE SCREW OF BOTTOM ROD TO MAKE SURE THE COTTER KEY HOLE ALIGNED WITH THE HOLE IN SLIDE BAR, TIGHT THE COTTER KEY.



8)ROG GUID INSTALLATION

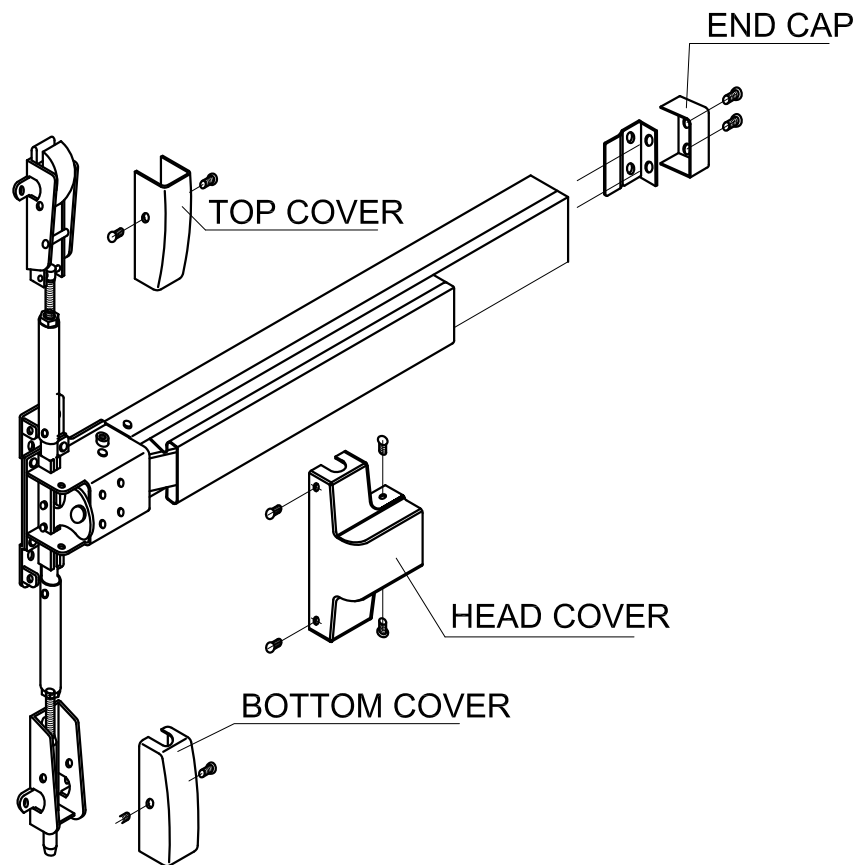
ATTACH ROD GUIDES TO ROD EQUIDISTANT BETWEEN THE LATCHES AND DEVICE HEAD. DRILL THE HOLE, AND FIX IT.



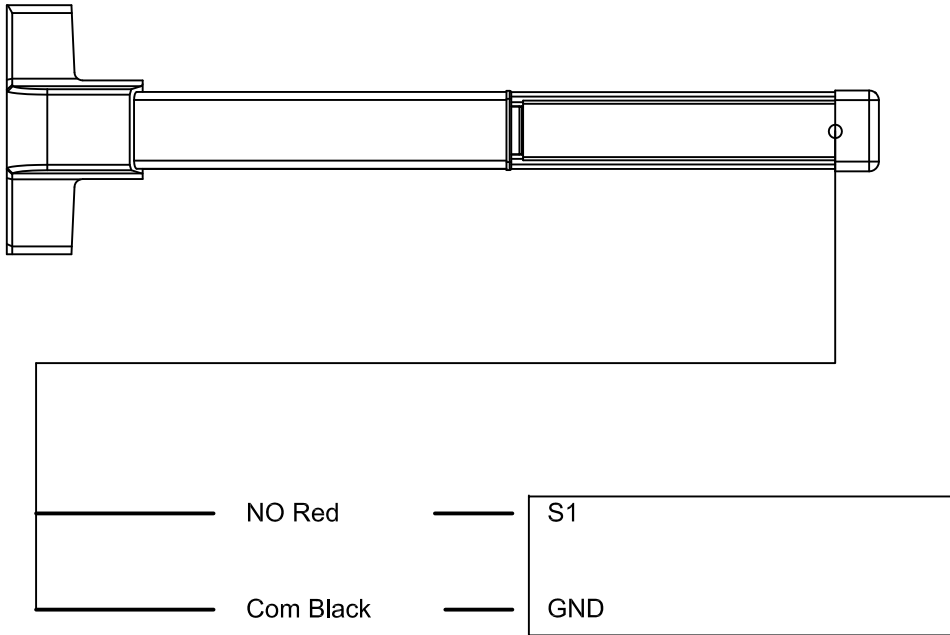
NOTE: THE ROD GUID SHOULD NOT BLOCK THE MOVEMENT OF THE ROD.

9) APPLY COVERS.

- A) ASSEMBLE COVER TO HEAD ASSEMBLY USING M4x8 SCREWS.
- B) ATTACH END CAP USING M4x8 SCREWS.
- C) ATTACH LATCH COVERS USING M4x8.

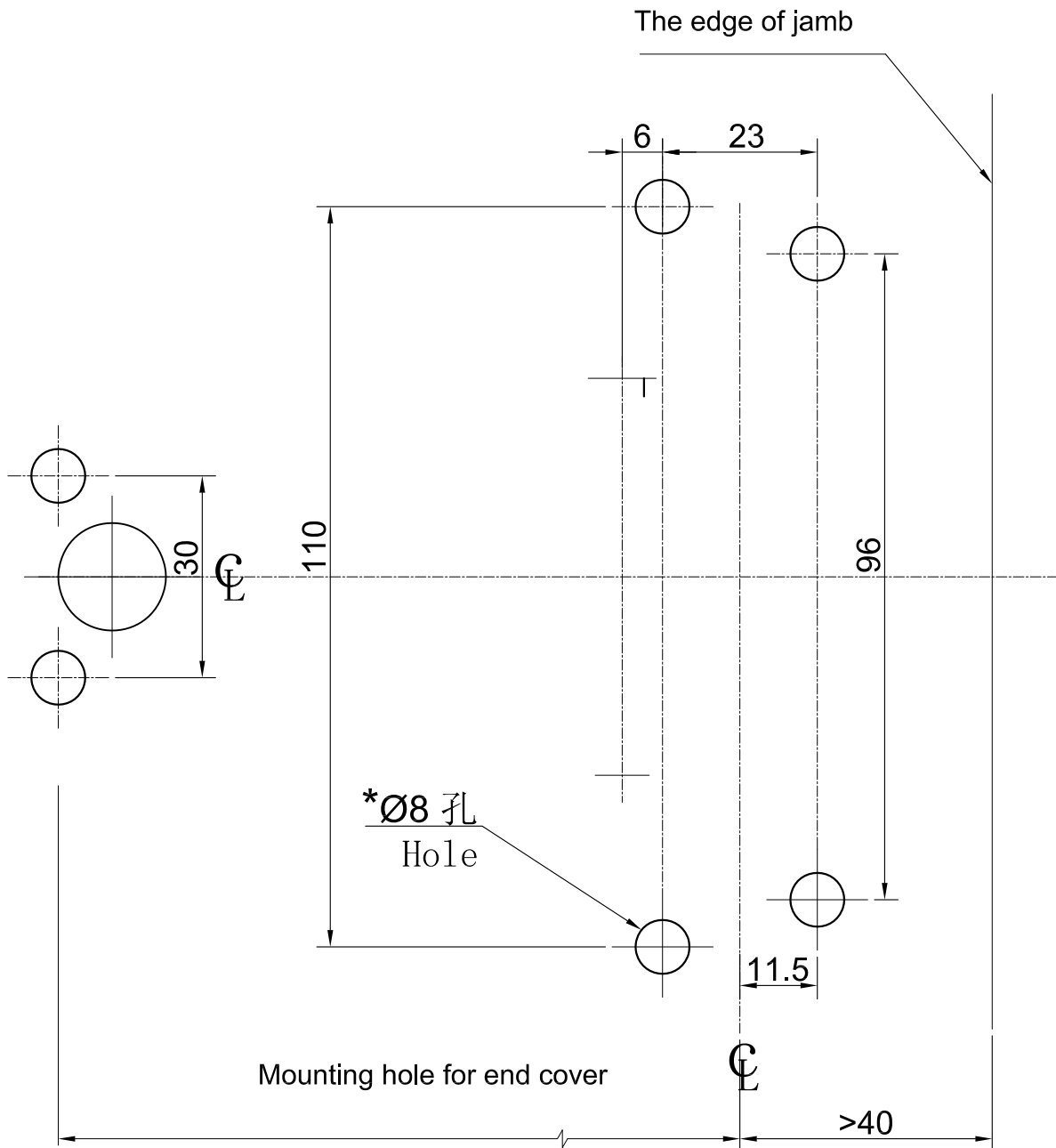


5. Wiring Diagram 406-TLM



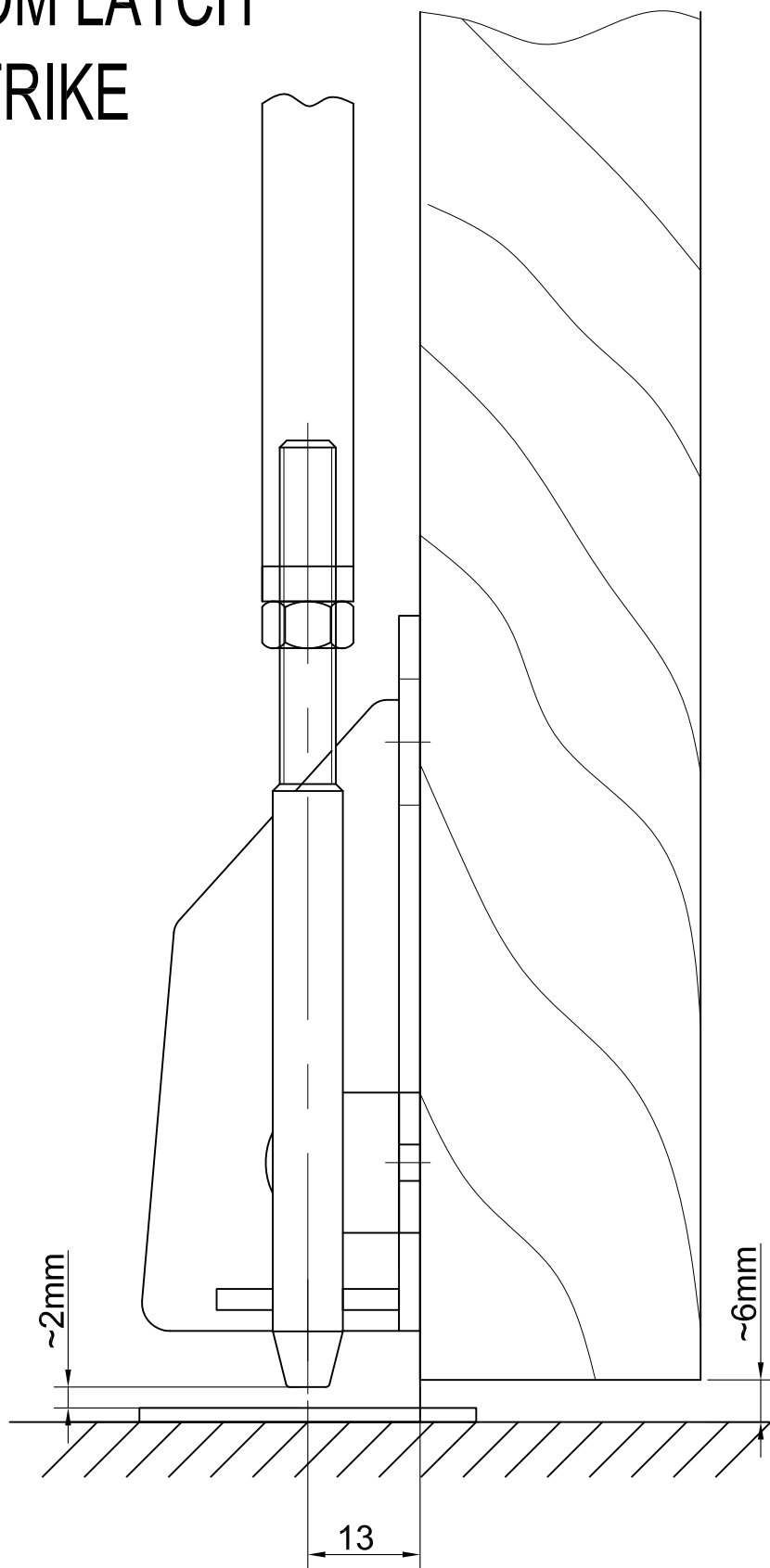
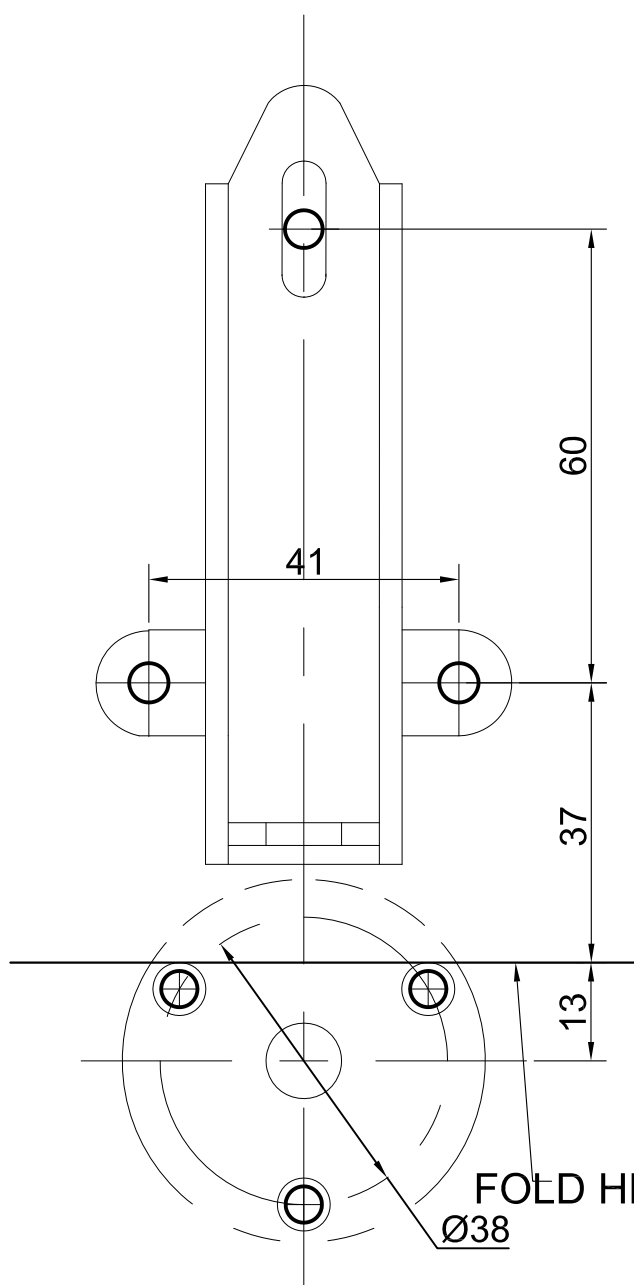
Port	Colour	Description
1	Red	TLM Dry connect
2	Black	TLM COM port

TEMPLATE FOR CMP406



* Note: Please confirm if it is necessary to drill the holes based on the selected products and accessories.
no need to drill the holes if use wood/taper screws.

TEMPLATE OF BOTTOM LATCH AND BOTTOM STRIKE



FOLD HERE FROM JAMB

$\varnothing 38$

TEMPLATE OF TOP LATCH AND TOP STRIKE

