

72-60TD EN ELECTROMAGNET MORTISE LOCK

1. FUNCTION:

Handle controlled locks can be set to function as fail locked or as fail unlocked.

In the fail locked setting, the lock can be opened by handle when power is on, and it can't be opened by handle when power is off.

In the fail unlocked setting, the electrical function is the opposite.

Only outside handle is electrically controlled.

The lock can always be opened by inside handle.

Mechanical opening by cylinder is always possible.

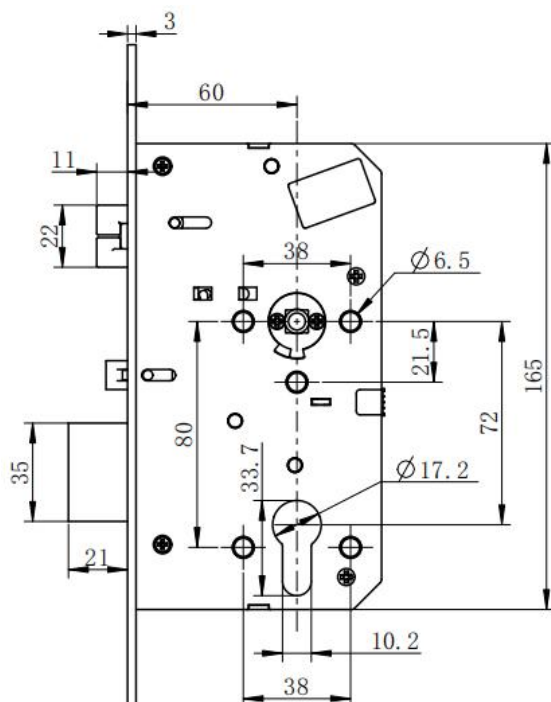


2. TECHNICAL DETAILS

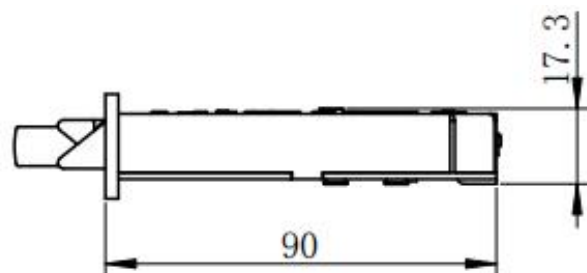
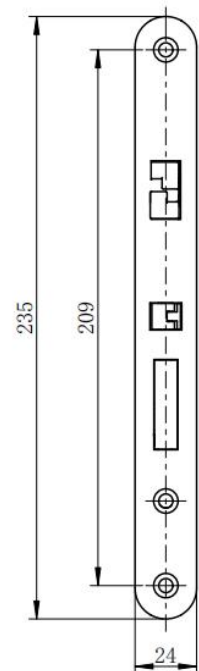
- Operating voltage: 12-24V DC
- Current: Max. 600-300ma, Idle 300-150ma
- Bolt throw: 20 mm (deadbolt), 10 mm (double action bolt)
- Backset: 60mm
- Distance: 72mm
- Forend: 20, 24 mm
- Spindle: 8 mm
- Monitoring outputs:

Deadbolt

Aux Latchbolt



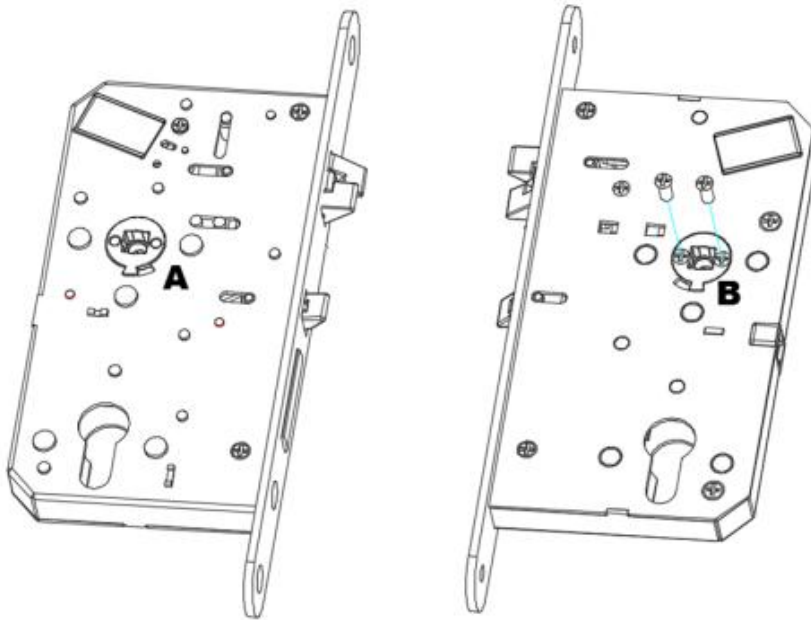
- Micro switches: Max. 125V, 1A
- Operating temperature: -20°C - +60°C
- Settable functions:
- Mechanical functions:
 - Handing of trigger bolt
 - Electrically controlled side
- Electrical function:
 - Fail locked / Fail unlocked
 - Handle used
 - Cylinder used



3. HANDED SETTING

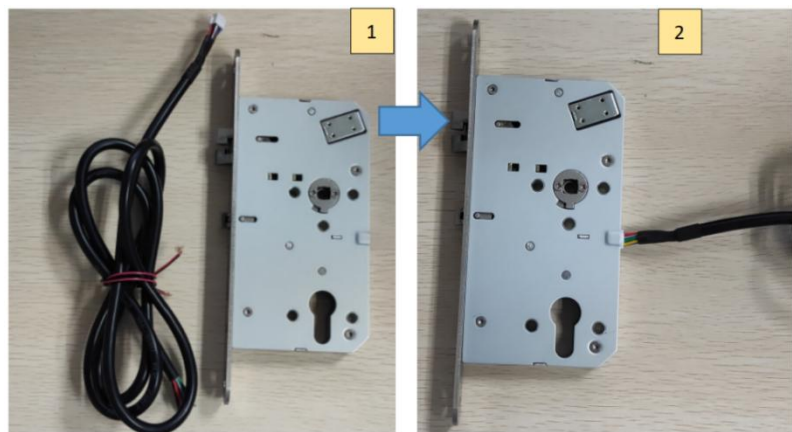
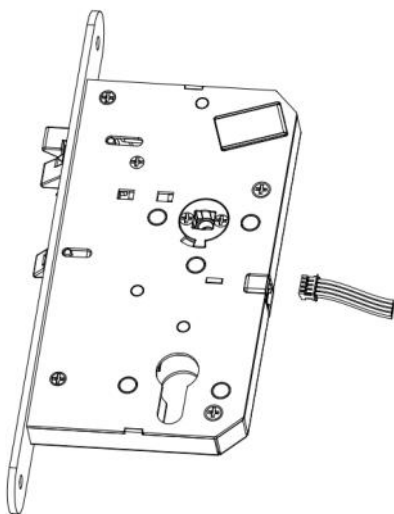
The 2 handed screws forward interior.

If the delivery standard doesn't meet the handed requirement, change the 2 screws to other side.



4. WIRING DIAGRAM

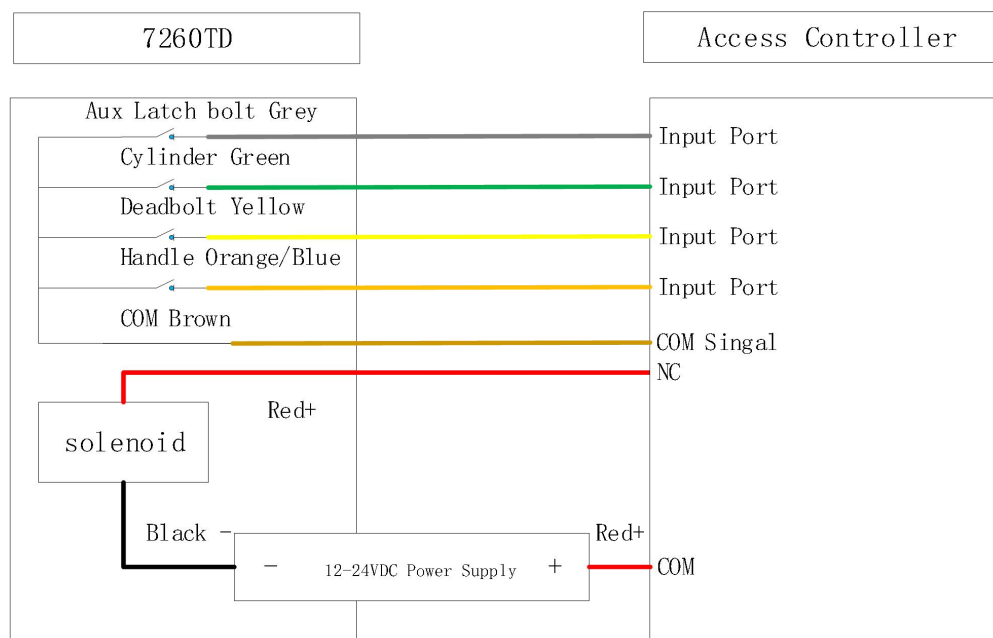
The delivery standard is Fail unlocked.



Color	Port	Monitoring
Grey	key1 NO	Aux Latch bolt
Green	key2 NO	Cylinder
Yellow	key3 NO	Deadbolt
Orange/Blue	key4 NC	Handle
Brown	key1、key、key1、key4 public C	
White	N/A	
Black	Power -	12-24VDC 300-150mA
Red	Power +	

5 Typical Application

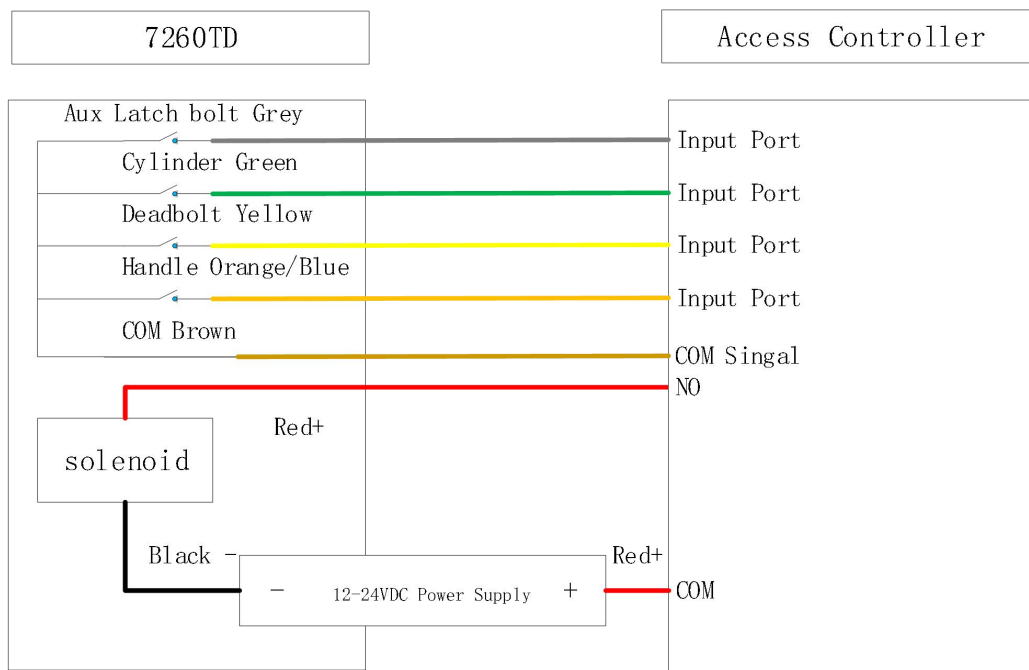
Fail Safe application



Notice:

When the lock work at fail safe mode, shut down the power can open the lock.
Orange or blue cable is the handle wire.

Fail Lock Application



Notice:

When the lock work at fail lock mode, switch on the power can open the lock.
Orange cable is the handle wire.